

# BL-MCB Bootloader programmer

The BL-MCB programmer is intended for installing new SW, or for looking for updated SW for MCB-01 and MCB-02 CAN BUS modules. It enables you to read or choose the number of the desired program, which is then used in the car, where the module will be installed. The programming is done through a USB interface.

## Included items:

BL-MCB Bootloader unit	1 pc
Connection cable	1 pc
USB connection cable	1 pc
Installation CD	1 pc

## Installation

Put the installation CD into your PC drive. Connect the BL-MCB to a USB port on your PC (the red and green indicators will flash). The Windows system announces that it has detected new hardware and it starts installing drivers. Either leave it to the operating system to find a suitable driver or select the driver manually from the "Driver CDM 2.00.00" directory on the CD in your drive. Once the drivers have been installed successfully, it is necessary to restart your computer.

If you connect a different BL-MCB to your computer in the future, the driver must be installed again.

## Jablotron Bootloader software use – MCB-01 CAN BUS module setup (programming)

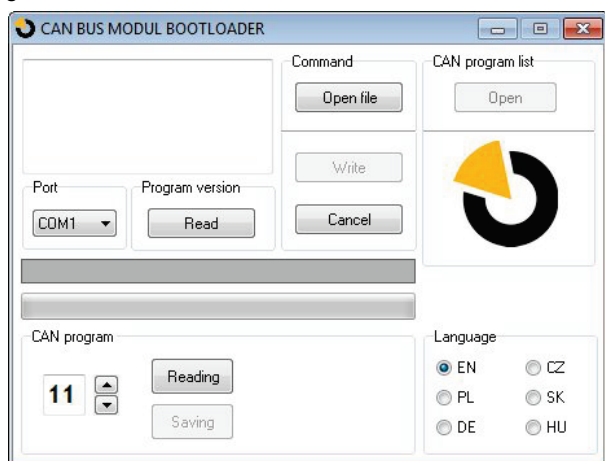
The "Bootloader\_jablotron.exe" file copy to your computer (from the MCB-01 folder), which will allow you to run the program directly in your computer without a CD.

When the program is running, you have to select the port which the system has assigned to the Bootloader unit and the communication speed. The assigned port can be found in Windows – e.g. Control panel/System/Hardware/Device manager / Ports (COM and LPT) – under USB serial port (the BL-MCB must be connected).

Clicking on the Command - Open file button allows you to select a file using your computer with the SW version which you want to load into the CAN BUS module. The name of the selected file is shown in the grey frame in the centre of the window. The filename includes the update date in DDMMRR format (e.g. MCB03-B4D-170408.hexfw). The CAN program list - Open button opens a list of vehicles supported by the SW.

Clicking on Command - Write uploads the file to the MCB-01 module. Correct uploading is confirmed in the white window showing the progress of programming. When the completion of programming is confirmed, you can disconnect the MCB-01. Do not disconnect the module, when the programming is in progress. Once the file has been uploaded, the Command - Read button can be used to verify whether the correct version of SW has been programmed.

With CAN program buttons it is possible to find and set the program number.



## MCB-Link software use – MCB-02 CAN BUS module setup (programming)



It's necessary to install MCB-Link software in your PC – from the MCB-02 folder

Click on the "File" option and choose a new FW file to perform an upgrade, information about supported vehicles is shown in the information windows. Using the "Upgrade firmware" button it is possible to perform the upgrading procedure.

The option "Connect device" serves for the selection of the port where the bootloader is connected (if automatic settings are not performed).

The option "Tools" is used to select the language of the application.

The option "Type of car (number of program)" in the bottom left corner of the software allows you to choose the program for a specific vehicle without using a special programming button to set it up.

The option "Timing (1-15)" allows selection of the time constant which is related to software determined for the MCB-02 unit to connect to a car alarm BUS (see details in the MCB-02 installation manual).

To get the unit's current software number settings right-click on the "Read" button in the bottom right corner.

Each version of FW has a sign with the date it was created. This information is also displayed in the "Data created" window when information is loaded from the unit.

## Technical parameters

Power supply	from USB
Supported OS	WIN 2000, WIN XP, WIN 7, WIN 8

Note: Although this product does not contain any harmful materials we suggest you return the product to the dealer or directly to the producer after use. For more detailed information visit [www.jablotron.com](http://www.jablotron.com).

Product supplied and service provided by: JABLOTRON ALARMS a.s., Pod Skalkou 33, Jablonec n.N., Czech Republic.

**JABLOTRON**  
CREATING ALARMS

JABLOTRON ALARMS a.s.  
Pod Skalkou 4567/33  
46601 Jablonec nad Nisou  
Czech Republic  
Tel.: +420 483 559 911  
Fax: +420 483 559 993  
Internet: [www.jablotron.com](http://www.jablotron.com)