

# JA-158J Wireless wall button

The device is a device of the **JABLOTRON** system. It enables you to remotely trigger a panic alarm, control other appliances, can be used as a doorbell or to control the alarm system. Thanks to bi-directional communication the device both visually and acoustically signals confirmation of a successful action. The device utilizes wireless Jablotron communication protocol and is powered by two batteries. The device should be installed by a trained technician with a valid certificate issued by an authorized distributor.

## Installation

The Jablotron system must be equipped with a JA-11xR radio module in order to enable the functionality of the device. The button must be installed onto a flat surface.

1. Before installation it is necessary to take the device apart into three parts see figure 2a, 2b and 2c.
  - a. Remove the top part of the housing (using a screwdriver) as shown in Fig. 2a.
  - b. Release the bottom part of the housing by pressing the 4 tabs into the corners as shown in 2b. Loosen each of them with a flat-headed screwdriver below a 45° angle.
  - c. Install the bottom part to the selected area as shown in 2c with the use of two screws. Please note the mark (arrow marked with the word „TOP“) indicating the correct orientation of the bottom part of the housing.
  - d. Insert the middle part into the bottom part so that the 4 tabs are secured in place as shown on 2b.
2. Insert the batteries and follow the instructions below.

**Note:** If you wish to place the device onto a KU68 type universal box in order to control devices (such as lightning, ventilation, etc.), only the middle and top part of the device may be fastened to it. Furthermore, it is necessary to disable the tamper detection function in the device's internal settings via recommended software.

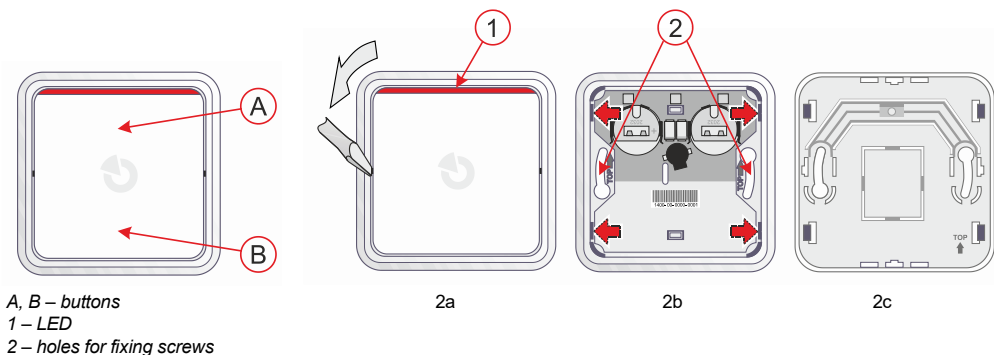


Fig. 1: Description of external parts of the product and layout of the button into 3 parts

## Enrolment to the system

Depending on the type of control panel, use the recommended software or application, see the control panel manual. Panic button can be enrol only to one control panel.

## Technical parameters

Power..... 2 x lithium battery, type CR 2032 (3.0 V/0.2 Ah)  
(PS type C according to EN 50131-6)

Important: Batteries are not included in the packaging

Typical battery lifetime approx. 3 years (if activated 1 x per day)

Quiescent power consumption.....15 µA

Maximum power consumption.....50 mA

LowBatt.....<2.2 V

Type of activation device.....typ V (min. 5 N, max. 8 N)

Communication frequency.....868.1 MHz, Jablotron protocol

Maximum radio-frequency output (ERP).....<25 mW

Communication range.....approx. 300 m (direct visibility)

Classification.....Security grade 2/environmental class II  
(EN 50131-1)

Environment.....Indoor general

Operational temperature range.....-10 °C to +40 °C

Average operating humidity.....75% RH, without condensing

Dimensions.....80 x 80 x 20 mm

Weight (w/o batteries).....58 g

Operating conditions according to.....ERC/REC 70-03

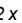
Certification body.....Trezor Test s.r.o. (nr. 3025)

In compliance with.....ETSI EN 300 220-1,-2, EN 55032,

EN 50130-4, EN 62368-1, EN 62311, EN IEC 63000,

EN 50131-1, EN 50131-3, EN 50131-5-3, EN 50131-6,

CLC/TS 50131-11, EN 50134-2

Recommended screw.....2 x  ø 3,5 x 40 mm  
(cylindrical/half round head)



JABLOTRON a.s. hereby declares that the JA-158J is in a compliance with the relevant European Union harmonization legislation: Directives No: 2014/53/EU, 2014/35/EU, 2014/30/EU, 2011/65/EU. The original of the conformity assessment can be found at [www.jablotron.com](http://www.jablotron.com) – the Downloads section.



Note: Disposing of this product correctly will help save valuable resources and prevent any potential negative effects on human health and the environment, which could otherwise arise from inappropriate waste handling. Please return the product to the dealer or contact your local authority for further details of your nearest designated collection point.

For an electronic version of this document (available in other languages) or an installation version in JA-100+, scan the attached QR code: <https://manuals.jablotron.com/ja-158j>.



**JABLOTRON**